

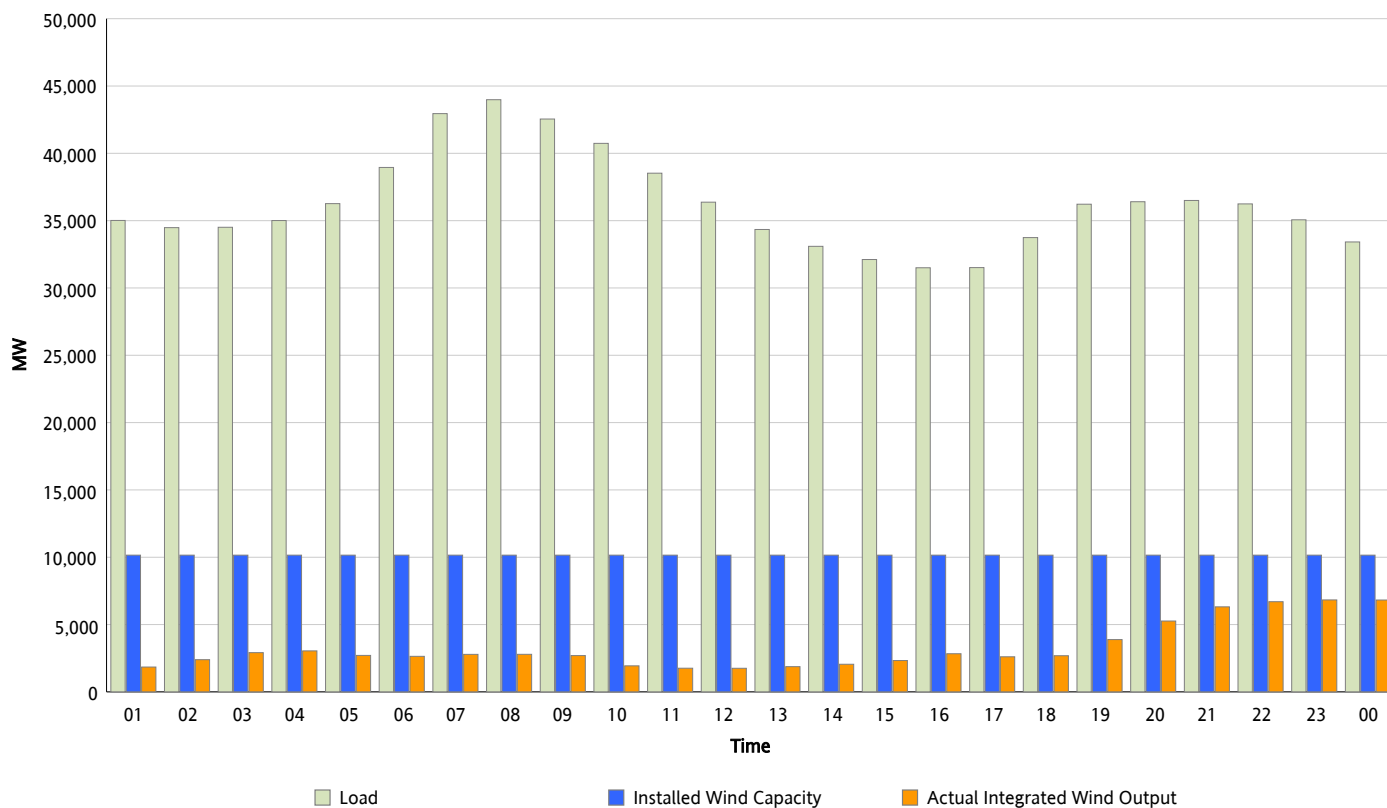


ERCOT Grid Operations

Wind Integration Report : 12/21/2012

Peak Load	43,980 MW
Load Peak Hour (HE)	08
Wind Over Peak	2,789 MW
Wind Record 11/10/12	8,521 MW
Max Wind Value*	6,953 MW
Wind Peak Time	23:11
Wind Integration %	20.5 %

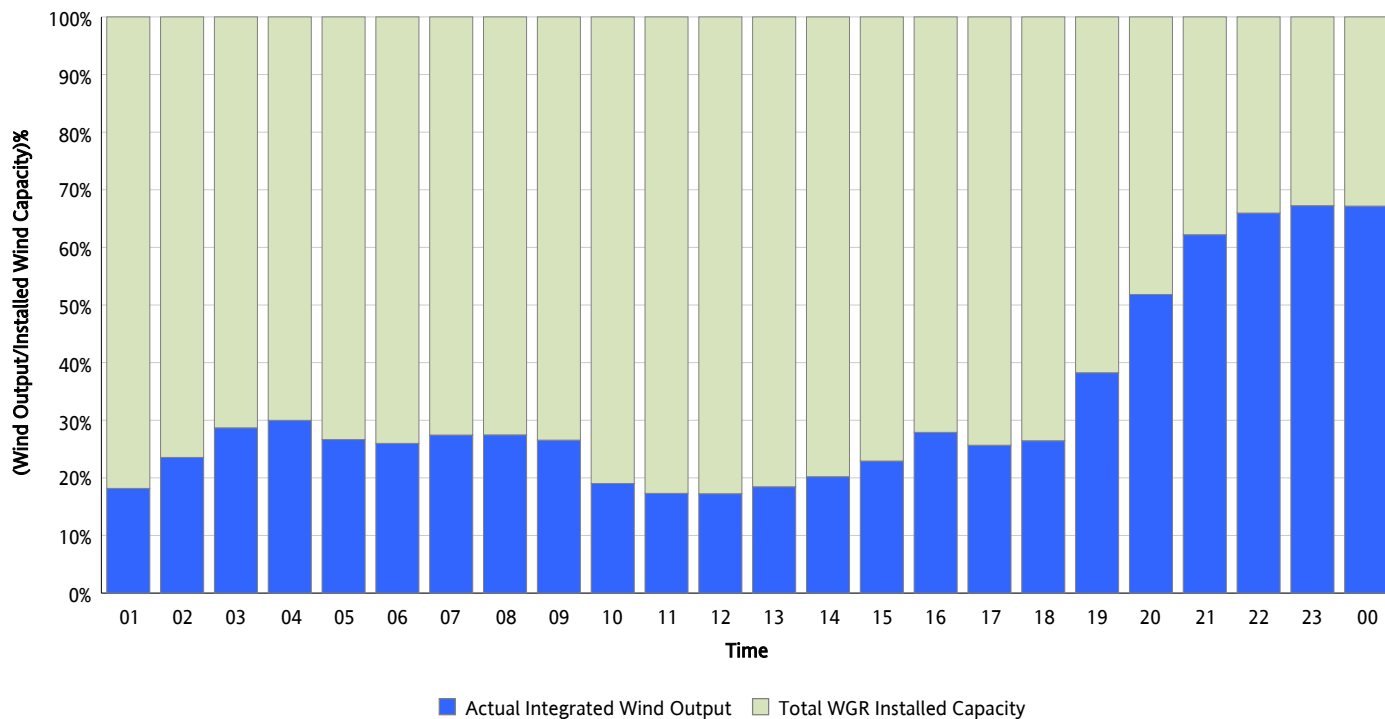
Hourly Average Actual Load vs. Actual Wind Output
12/21/2012



* Wind Record and Wind Max represent instantaneous values and the rest of the values are integrated over the hour

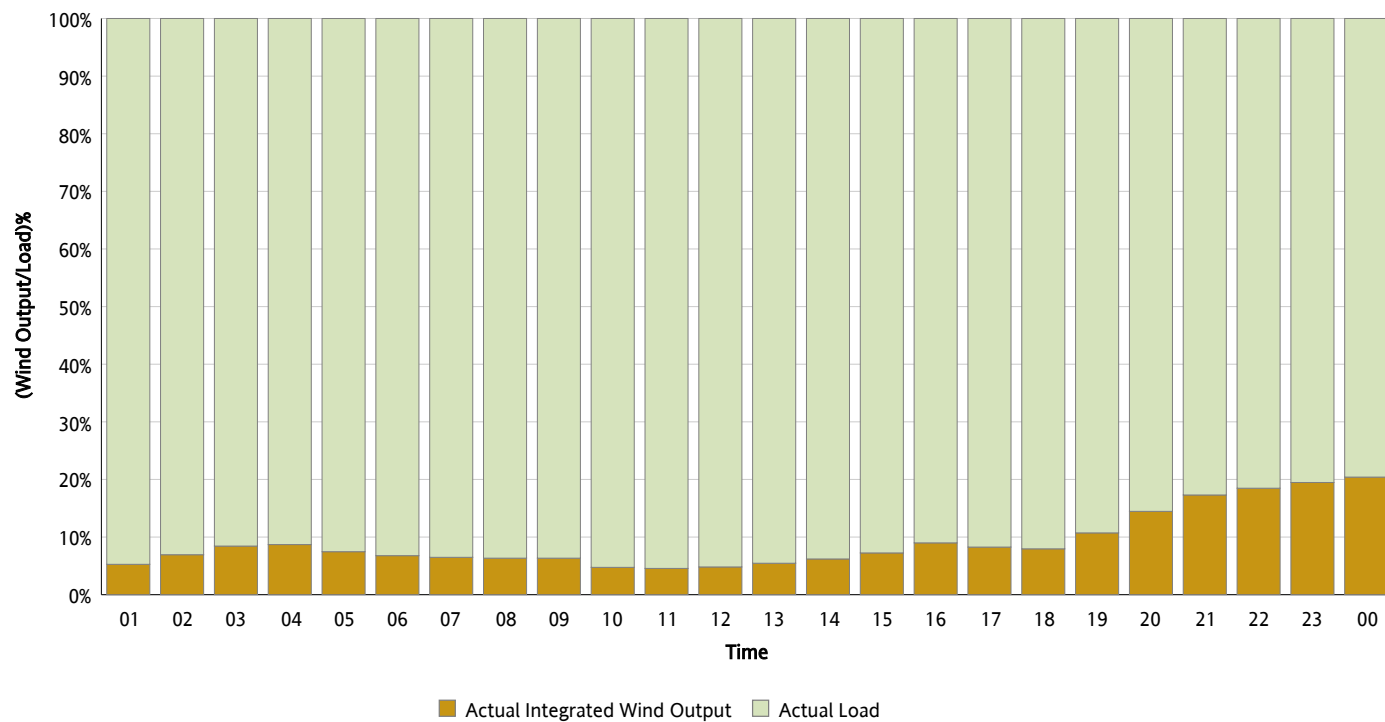
Actual Wind Output as a Percentage of the Total Installed Wind Capacity

12/21/2012



Actual Wind Output as a Percentage of the ERCOT Load

12/21/2012



ERCOT Load vs. Actual Wind Output

12/14/2012 - 12/21/2012

